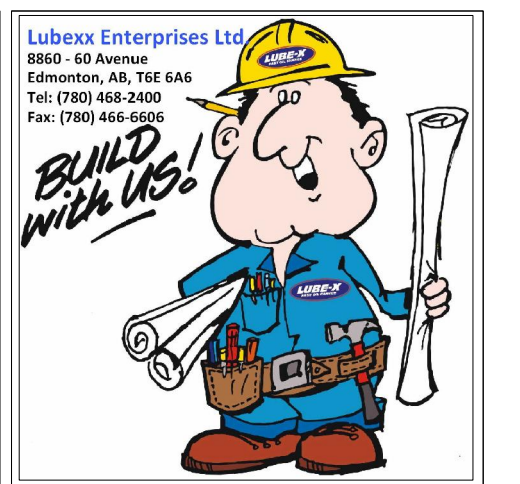
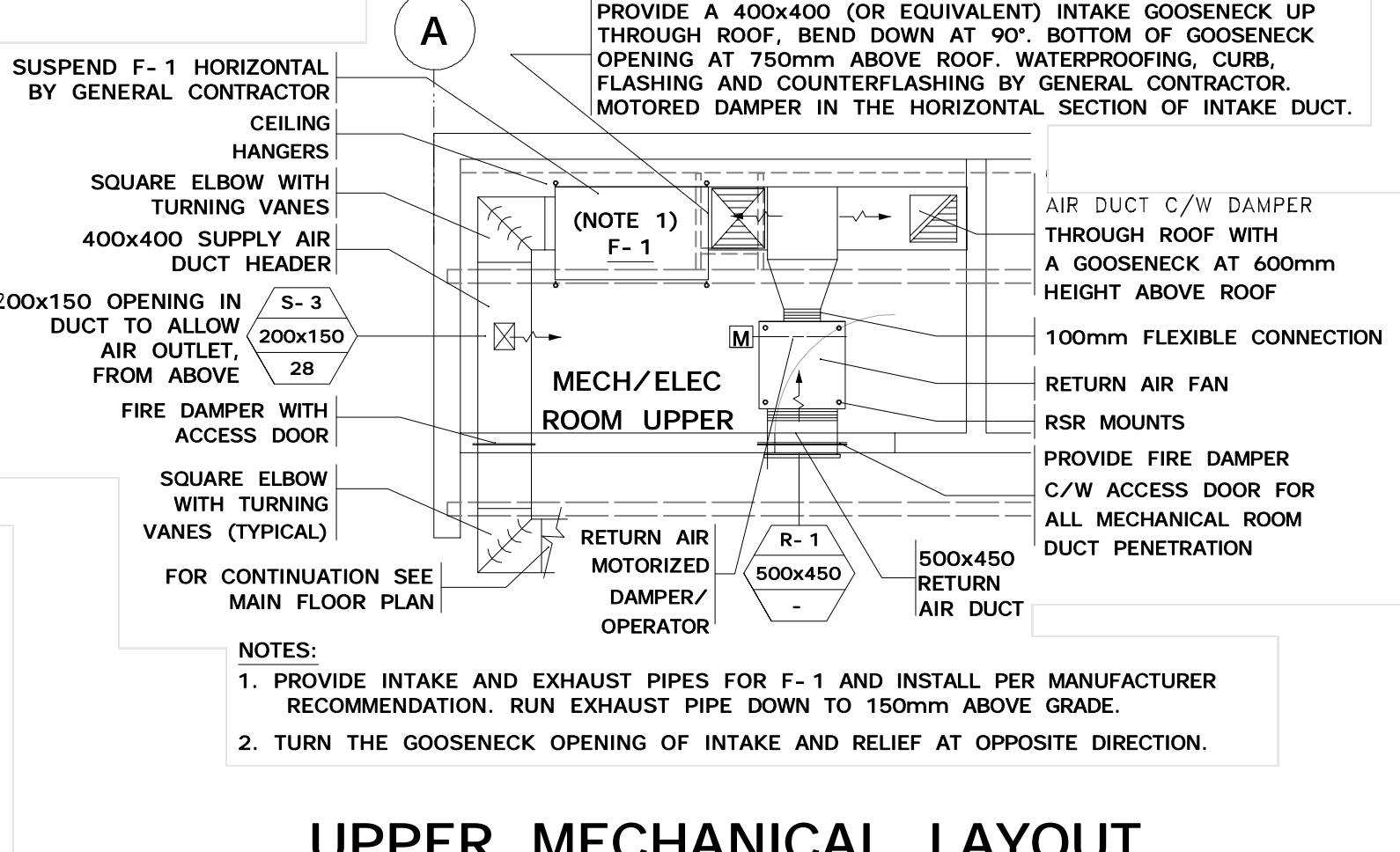
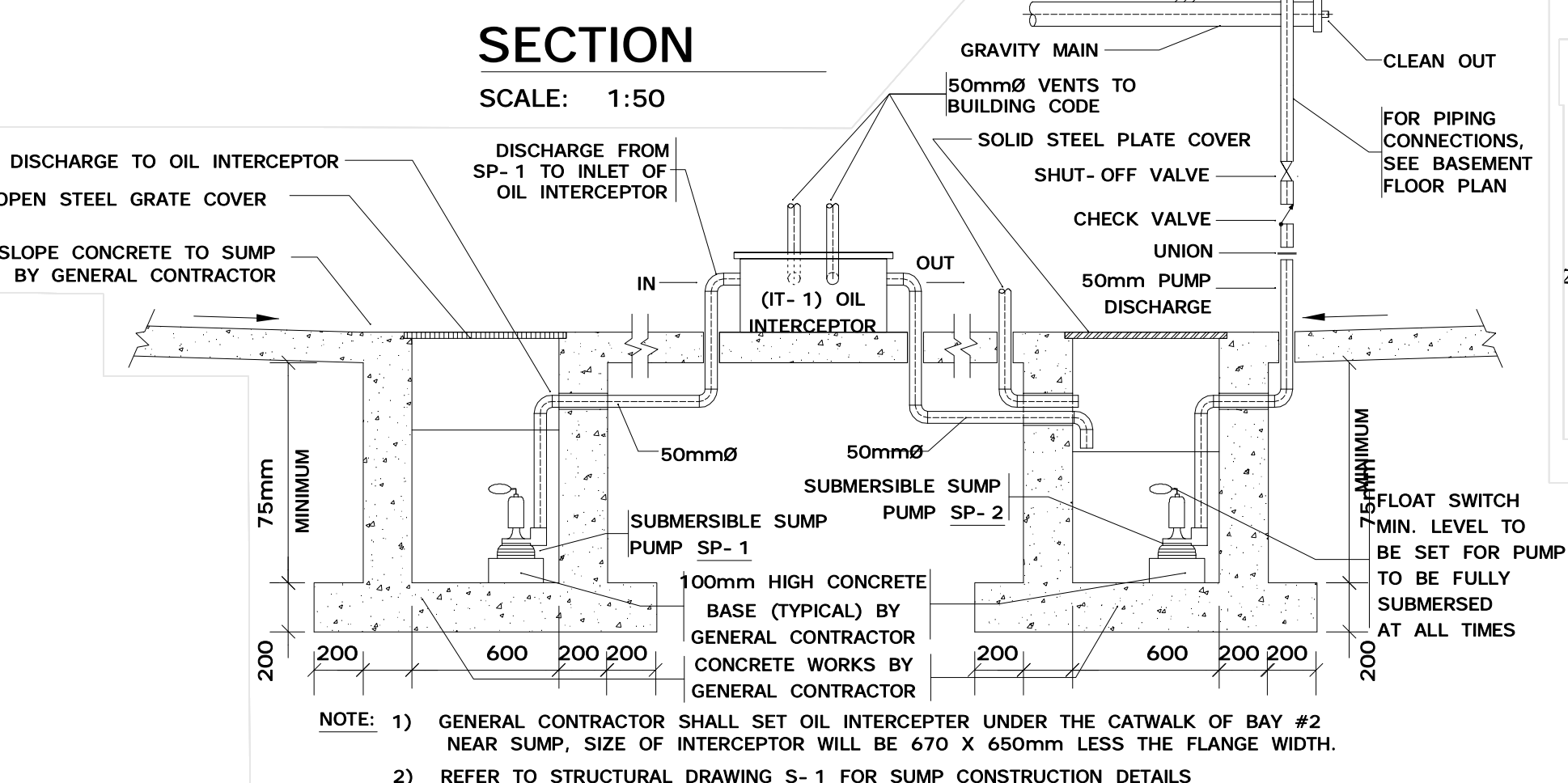
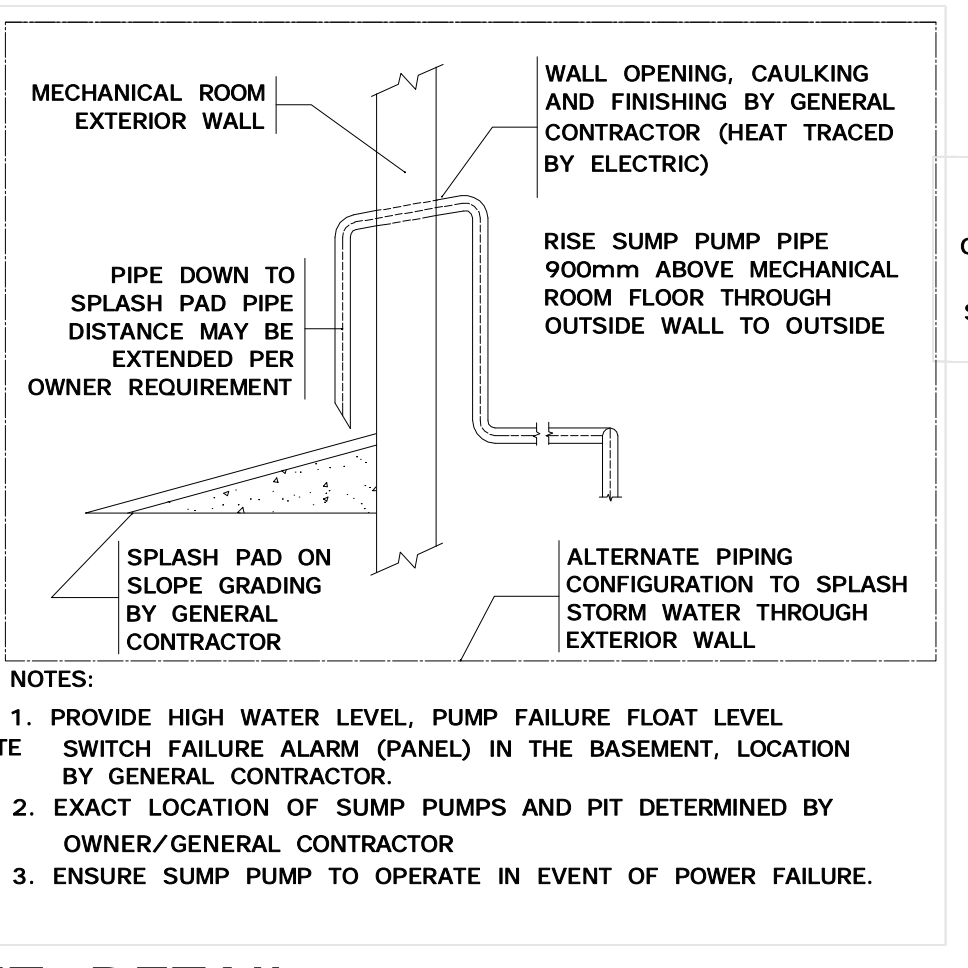
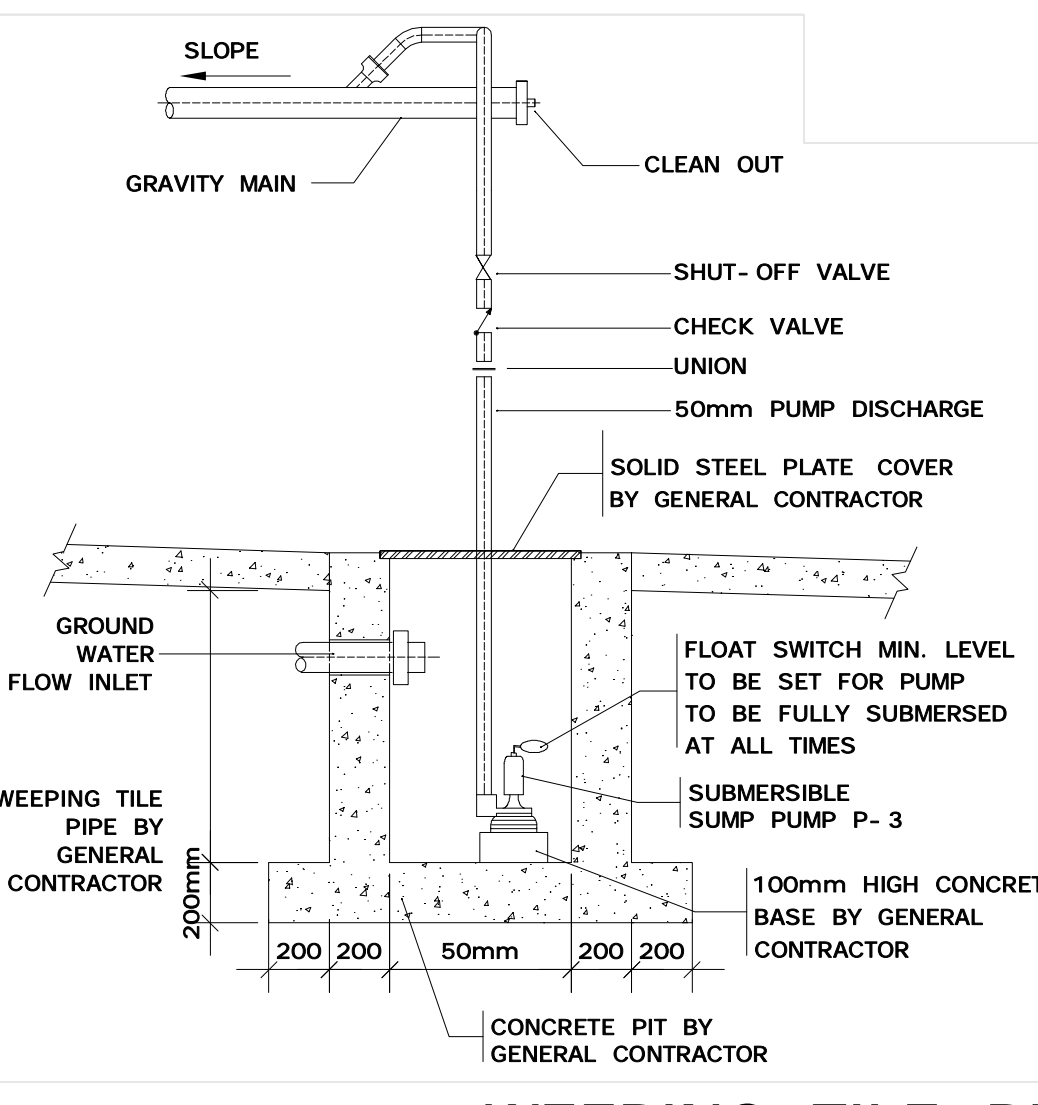
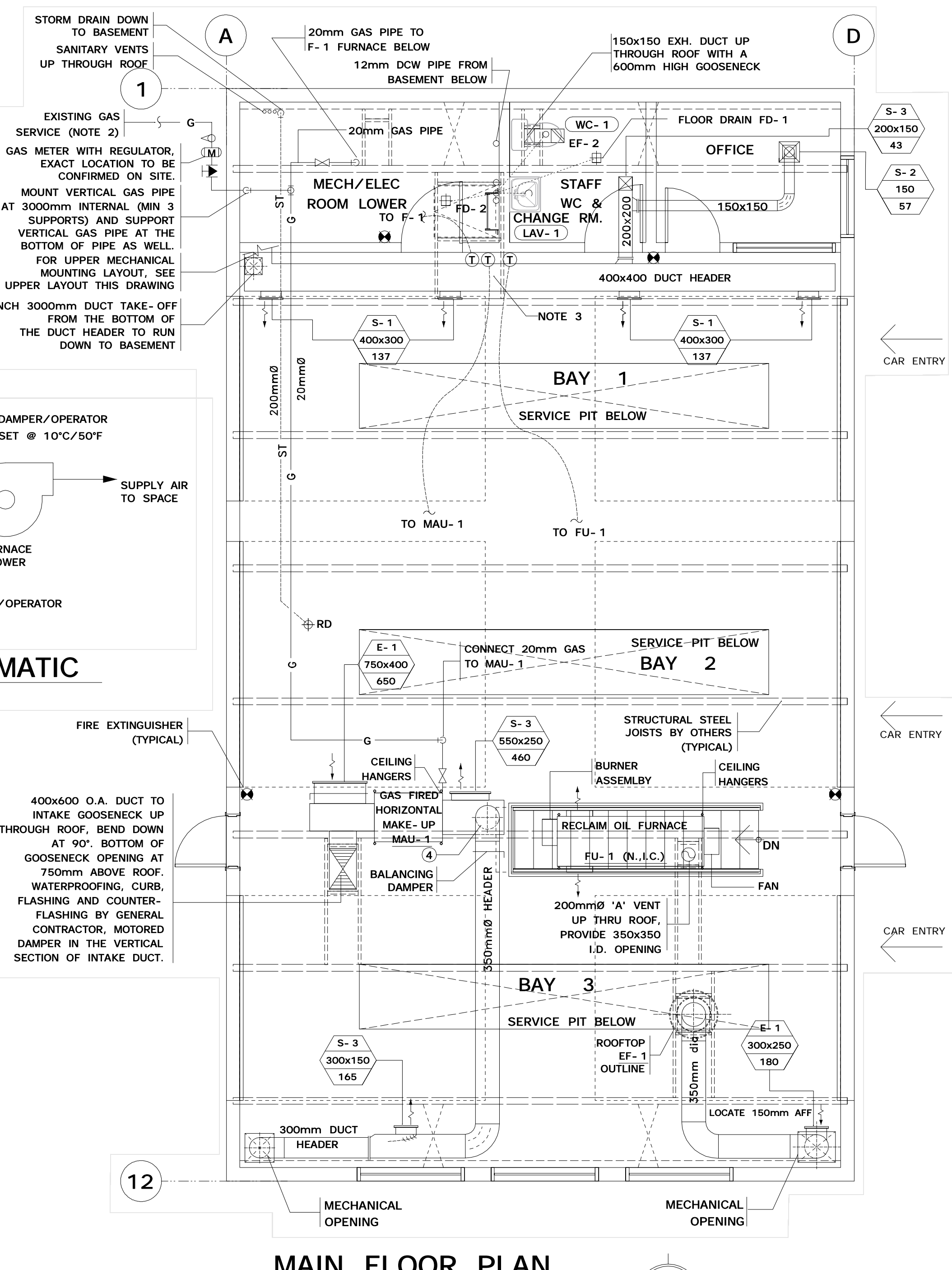
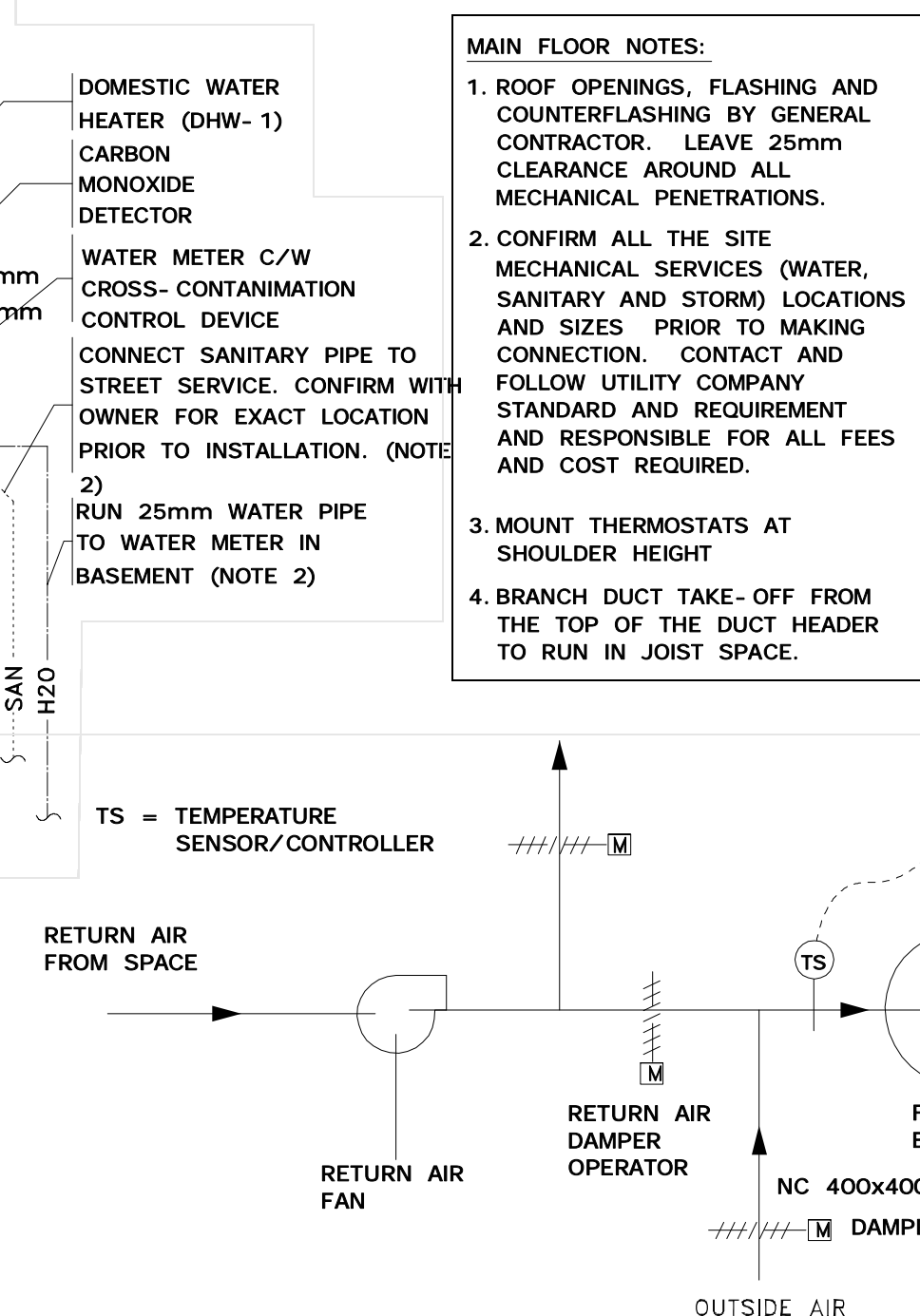
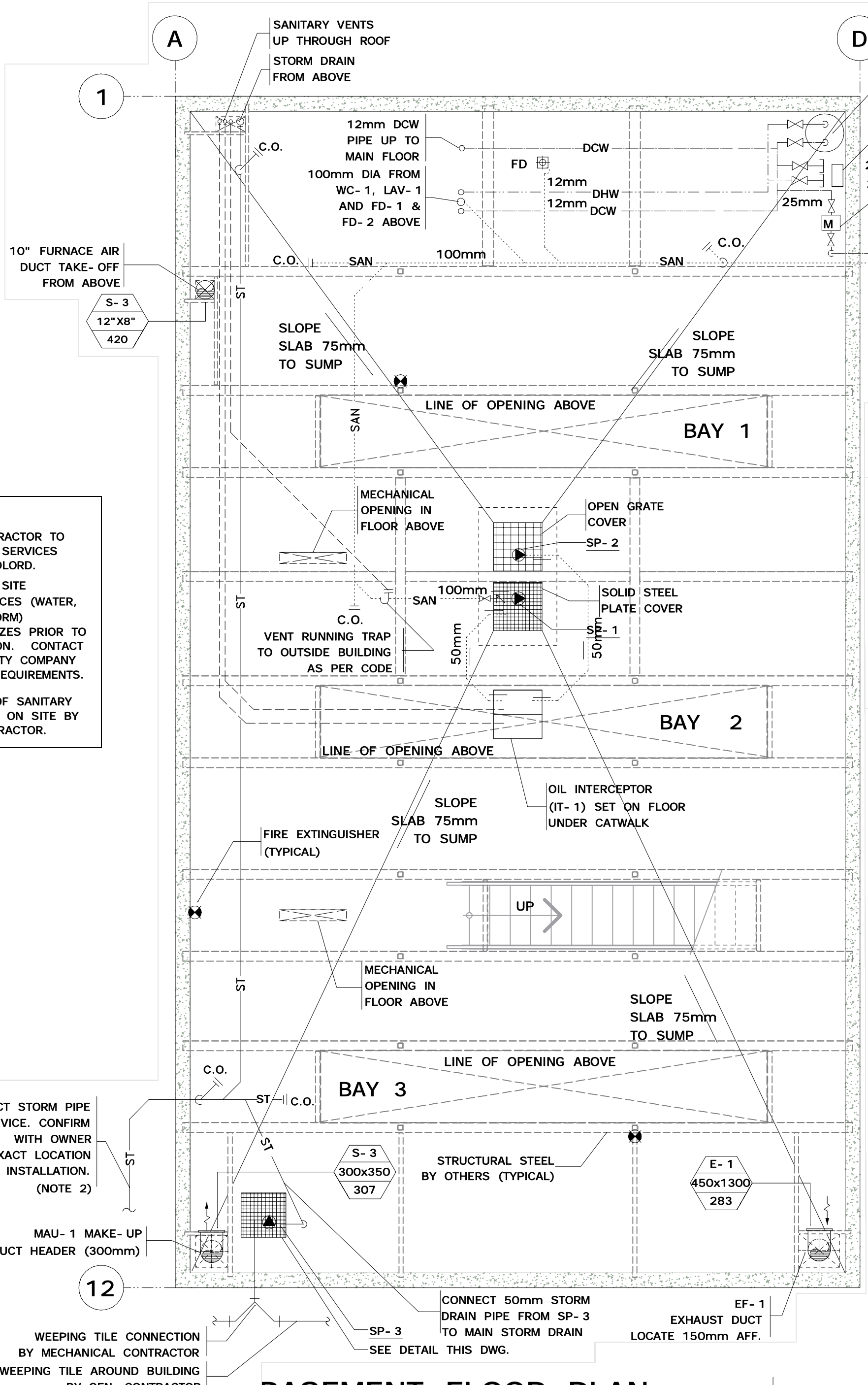


**BASEMENT NOTES:**

1. MECHANICAL CONTRACTOR TO CONNECT TO SITE SERVICES PROVIDED BY LANDLORD.
2. CONFIRM ALL THE SITE MECHANICAL SERVICES (WATER, SANITARY AND STORM) LOCATIONS AND SIZES PRIOR TO MAKING CONNECTION. CONTACT AND FOLLOW UTILITY COMPANY STANDARDS AND REQUIREMENTS.
3. EXACT LOCATION OF SANITARY DRAIN DETERMINED ON SITE BY GENERAL CONTRACTOR.



REVISIONS: \_\_\_\_\_ DATE: \_\_\_\_\_

NO.	DESCRIPTION	DATE

ISSUED FOR DEVELOPMENT PERMIT 12.06.07  
ISSUED FOR DESIGN REVIEW 11.08.16

**SYMBOL LEGEND:**

SYMBOL	DETAIL NUMBER

FIRST PAGE  
REFERENCE

**DEVELOPER:**  
**MELCOR DEVELOPMENTS LTD.**  
900 The Melton Building  
1818 Jasper Avenue, Edmonton, Alberta, T5J 1Y8  
Tel: (780) 423-9031

**PRIME CONSULTANT:**  
**VENTURE ENGINEERING CONSULTANTS LTD.**  
P: 780-484-1974 | F: 780-484-1975 | vventure@connect.ab.ca  
www.Venture-Engineering.com | 4063 Aspen Drive East  
Edmonton, Alberta, T6J 2A7

**SUB-CONSULTANT:**  
**STUDIO SEEPISH CONSULTING ENGINEERS**  
TEL: 780-482-0042  
FAX: 780-487-7819  
E-Mail: rstudio@stseepish.com

**SEAL:**

DURING TENDERING AND CONSTRUCTION, ANY AND ALL QUESTIONS ARE TO BE REFERRED TO TIM STADNYK OF LUBEX ENTERPRISES LTD. AT 780-232-0425 (NOT THE CONSULTANTS) FOR CORRECT INTERPRETATION BEFORE PROCEEDING WITH THE WORK.

**LUBEX**  
**KINGSVIEW**  
**MARKET SQUARE**  
3-BAY (RIGHT)  
RAPID DRIVE-THRU  
OIL CHANGE FACILITY

CITY: AIRBORNE PROVINCE: ALBERTA

THESE DRAWINGS AND SPECIFICATIONS, AS INSTRUMENTS OF SERVICE ARE THE PROPERTY OF LUBEX ENTERPRISES LTD. THE COPYRIGHT IN THE SAME BEING RESERVED TO THEM. NO REPRODUCTION MAY BE MADE WITHOUT THE PERMISSION OF LUBEX ENTERPRISES LTD. ANY AND ALL ERRORS OR OMISSIONS IN THIS DRAWING AND/OR THE SPECIFICATIONS SHALL BE REFERRED TO LUBEX ENTERPRISES LTD. FOR CORRECT INTERPRETATION AND PROPER REVISION BEFORE PROCEEDING WITH THE WORK.

**DRAWING TITLE:**  
**MECHANICAL FLOOR PLANS AND DETAILS**

SCALE: 1:50 OR AS NOTED  
DRAWN BY: JJC  
CHECKED: TRS  
FILE NO.: 1108-65  
DRAWING ISSUE DATE: August 27, 2012  
DATE OF PLOT: August 27, 2012  
SHEET NO.: